



**ZEBRA**

# **TC8XXX Series**

**(TC8000 / TC8300)**

## **Configuration and Accessories Guide**

# CONTENTS

- I. TC8XXX Series Configuration Guide
- II. TC8XXX Series Accessories

THE NEXT BIG THING IN WAREHOUSE MOBILITY



# TC8XXX

(TC8000 / TC8300)

## Configuration Guide



CONFIGURATION OPTIONS:	TC83XX	OPTION	DESCRIPTION
<b>Wireless Option</b>	TC83B <b>X</b> -XXXXXXXXXX	B	WLAN 802.11 a/b/g/n/ac MU-MIMO & BT 5.0 BLE
<b>RFID</b>	TC83B <b>0</b> -XXXXXXXXXX	0	None
	TC83B <b>H</b> -XXXXXXXXXX	H	HF RFID Radio with NFC
<b>Scan Engine</b>	TC83BX- <b>A</b> XXXXXXXXXX	A	SE965 1D Laser
	TC83BX- <b>2</b> XXXXXXXXXX	2	SE4750MR 2D Imager Medium Range
	TC83BX- <b>3</b> XXXXXXXXXX	3	SE4850 2D Imager Extended Range (ERI)
	TC83BX- <b>4</b> XXXXXXXXXX	4	SE4750DP 2D Imager DPM w/ light diffusion (Q3, 2019)
	TC83BX- <b>5</b> XXXXXXXXXX	5	SE4750DP-A 2D Imager DPM wide angle w/ light diffusion (Q3, 2019)
	TC83BX- <b>6</b> XXXXXXXXXX	6	SE4770SR 2D Imager Standard Range (Q4, 2019)
<b>Camera</b>	TC83BX-X <b>0</b> XXXXXXXXXX	0	None
	TC83BX-X <b>2</b> XXXXXXXXXX	2	13 MP Color Camera
<b>Display</b>	TC83BX-XX <b>0</b> XXXXXXXXXX	0	Color 4" Diagonal VGA
<b>Memory</b>	TC83BX-XXX <b>5</b> XXXXXX	5	4 GB RAM / 32 GB Flash
	TC83BX-XXX <b>6</b> XXXXXX	6	8 GB RAM / 128 GB Flash (Q3, 2019)
<b>Operating System</b>	TC83BX-XXXX <b>A</b> XXXXXX	A	Android
<b>Sensors</b>	TC83BX-XXXX <b>5</b> XXXX	5	Accelerometer, Gyroscope
	TC83BX-XXXX <b>6</b> XXXX	6	Accelerometer, Gyro, Scan vibration
	TC83BX-XXXX <b>7</b> XXXX	7	Accel, Gyro, Scan vib, Magnetic sensor, Proximity Sensor
<b>Audio</b>	TC83BX-XXXX <b>1</b> XXX	1	One Display Side Microphone
<b>Additional Features</b>	TC83BX-XXXX <b>0</b> XX	0	None
	TC83BX-XXXX <b>C</b> XX	C	Condensation Resistant
<b>Region</b>	TC83BX-XXXX <b>CN</b>	CN	China (Q3, 2019)
	TC83BX-XXXX <b>IN</b>	IN	India (Q3, 2019)
	TC83BX-XXXX <b>NA</b>	NA	North America (US, CA, PR)
	TC83BX-XXXX <b>RW</b>	RW	Rest Of World
	TC83BX-XXXX <b>TA-KT</b>	TA-KT	TAA (Trade Agreement Act – USA) (Q3, 2019)

# TC8300 Configurations Available



*TC8300 DPM w/ light diffusion \**

SKU Category	Features
<b>Base</b>	<p><b>Sensors</b> Gyroscope &amp; Accelerometer</p> <p><b>Memory</b> 4 GB RAM / 32 GB Flash</p>
<b>Condensation Resistant</b>	<p><b>Includes everything in a base unit as well as:</b></p> <p><b>Added features</b> Condensation resistant desiccant cartridge Scan vibration feedback</p>
<b>Package 1</b>	<p><b>Includes everything in a base unit as well as:</b></p> <p><b>Added sensors</b> Proximity sensor Magnetic sensor</p> <p><b>Added features</b> 13MP color rear camera HF RFID Radio with NFC Scan vibration feedback</p>
<b>Package 2 High Memory *</b>	<p><b>Includes everything in Package 1 as well as:</b></p> <p><b>Increased memory</b> 8 GB RAM / 128 GB 3D TLC Flash</p>
<b>DPM *</b>	<p><b>Includes everything in a base unit as well as:</b></p> <p><b>Added features</b> DPM 2D Imager with light diffusion Scan vibration feedback</p>

\* Available Q3, 2019

## TC8XXX Data Capture Methods

Scan Engines	
<b>TC80XX-A</b>	SE965 1D Standard Range Laser
<b>TC80XX-1</b>	SE4750 2D Standard Range Imager
<b>TC80XX-2</b>	SE4750 2D Medium Range Imager
<b>TC80XX-3</b>	SE4850 2D Extended Range Imager
<b>TC83XX-A</b>	SE965 1D Standard Range Laser
<b>TC83XX-2</b>	SE4750 2D Medium Range Imager
<b>TC83XX-3</b>	SE4850 2D Extended Range Imager
<b>TC83XX-4</b>	SE4750DP 2D DPM Standard Range Imager *
<b>TC83XX-5</b>	SE4750DP 2D DPM Wide Angle Imager *
<b>TC83XX-6</b>	SE4770 2D Standard Range Imager **



**TC8XXX-A**  
1D Standard Range Laser



**TC8000-1**  
Standard Range Imager



**TC8XXX-2**  
Medium Range Imager



**TC8XXX-3**  
Extended Range Imager



**TC83XX-4/5**  
DPM Imager w/ light diffusion \*

# TC8XXX

(TC8000 / TC8300)

## Accessories Guide



# Step 1:

## Choose a charging method

### Cradle options



### Single Slot Cradle w/Spare Battery Charger:

**CRD-TC8X-2SUCHG-01:** Single slot USB Cradle, w/spare battery charging, charges one device and one spare battery. **For all non-DPM units.**

**CRD-TC8D-2SUCHG-01:** Single slot USB Cradle, w/spare battery charging, charges one device and one spare battery. **For DPM units.** \* Available Q3, 2019

Allows USB communication to the device with an additional micro-USB cable.

**Requires:** Power Supply **PWR-BGA12V50W0WW**, DC Line Cord **CBL-DC-388A1-01** and Country Specific 3 wire AC Line Cord.

## Additional accessories for single slot cradle



### 25-124330-01R

Micro-USB to USB Cable for single slot cradle



### PWR-BGA12V50W0WW

Level VI AC/DC Power Supply (Brick, replacement for PWRS-14000-148R)

**AC Input:** 100-240V, 2.4A

**DC Output:** 12V, 4.16A, 50W

**Requires:** DC line cord and Country specific grounded AC line cord.



### CBL-DC-388A1-01

DC Line Cord for running the single slot cradles or battery chargers from a single Level VI power supply PWR-BGA12V50W0WW, Level VI replacement for PWRS-14000-148R.



### 23844-00-00R

US AC line cord, 7.5 feet long, grounded, three wire for power supplies.

**Note:** additional cradle configurations are available via a custom product request. In addition, spare cradle cups are available as service spare parts.

# Step 1:

## Choose a charging method

### Mount options for single slot cradle



**CRD-TC8X-2SUCHG-01:** Single slot USB Cradle, w/spare battery charger, allows charging one device and one spare battery. Allows USB communication to the device with an additional micro-USB cable. **For all non-DPM units.**

**CRD-TC8D-2SUCHG-01:** Single slot USB Cradle, w/spare battery charger, allows charging one device and one spare battery. Allows USB communication to the device with an additional micro-USB cable. **For all DPM units.** \* Available Q3, 2019

## Desktop bracket for single slot cradle



### BRKT-SCRD-SSDK-01

TC8XXX Desk Mounting Bracket for ShareCradle. Allows to install the Single Slot Cradle w/Spare Battery Charger on a flat surface. (i.e. desktop). **Includes:** Two-slot cradle desk plate for bracket (BRKT-SCRD-SSPL-01) and stands for desk plate (BRKT-SCRD-DKST-01). **Requires:** Single slot ShareCradle w/spare battery charger.

# Step 1:

## Choose a charging method

### Cradle options



### Multi-Slot Cradle options:

For all non-DPM units

**CRD-TC8X-5SCHG-01:** 5Slot Charge Only Cradle, charges up to five devices.

**CRD-TC8X-5SETH-01:** 5Slot Ethernet Cradle, charges up to five devices and provides Ethernet communication.

**CRD-TC8X-5SC4BC-01:** 4Slot Charge Only Cradle with 4Slot Spare Battery Charger, charges up to 4 devices and up to 4 spare batteries on the same cradle.

**CRD-TC8X-5SE4BC-01:** 4Slot Ethernet Cradle with 4Slot Spare Battery Charger, charges up to 4 devices and up to 4 spare batteries on the same cradle and provides Ethernet communication.

**All Cradles Require:** Power Supply **PWR-BGA12V108W0WW**, DC Cord **CBL-DC-381A1-01** and Country Specific 3 wire AC Line Cord.

## Additional accessories for multi-slot cradles



### **PWR-BGA12V108W0WW**

Level VI AC/DC Power Supply (Brick, Replacement for PWRS-14000-241R)

**AC Input:** 100-240V, 2.8A

**DC Output:** 12V, 9A, 108W

**Requires:** DC line cord and Country specific grounded AC line cord.



### **CBL-DC-381A1-01**

DC Line Cord for running multi-slot cradles from a single Level VI power supply PWR-BGA12V108W0WW, Level VI replacement for PWRS-14000-241R



### **23844-00-00R**

US AC line cord, 7.5 feet long, grounded, three wire for power supplies.

**Note:** Additional cradle configurations are available via a custom product request. In addition, spare cradle cups are available as service spare parts.

# Step 1:

## Choose a charging method

### Mount options for multi-slot cradle



**CRD-TC8X-5SCHG-01:** 5Slot Charge Only Cradle, charges up to five devices.

**CRD-TC8X-5SETH-01:** 5Slot Ethernet Cradle, charges up to five devices and provides Ethernet communication.

**CRD-TC8X-5SC4BC-01:** 4Slot Charge Only Cradle with 4Slot Spare Battery Charger, charges up to 4 devices and up to 4 spare batteries on the same cradle.

**CRD-TC8X-5SE4BC-01:** 4Slot Ethernet Cradle with 4Slot Spare Battery Charger, charges up to 4 devices and up to 4 spare batteries on the same cradle and provides Ethernet communication.

## Desktop bracket for multi-slot cradle



### BRKT-SCRD-MSDK-01

TC8XXX Desk Mounting Bracket for ShareCradle. Allows to install any Multi-Slot cradle on a flat surface. (i.e. desktop).

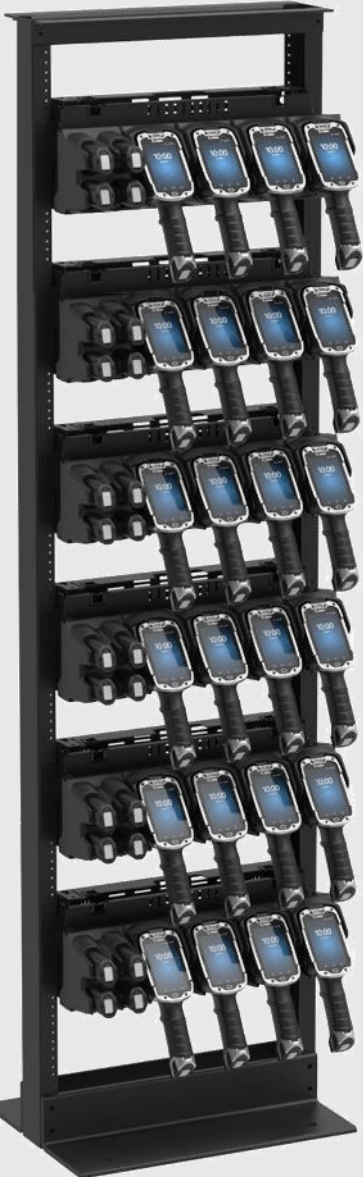
**Includes:** Multi-Slot cradle desk plate for bracket (BRKT-SCRD-MSPL-01) and stands for desk plate (BRKT-SCRD-DKST-01).

**Requires:** Multi-Slot ShareCradle.

# Step 1:

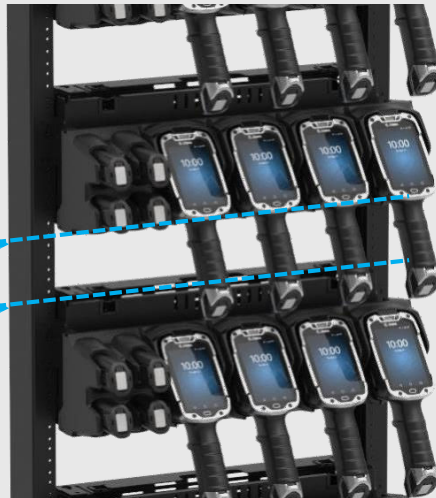
## Choose a charging method

### Mount options for multi-slot cradle

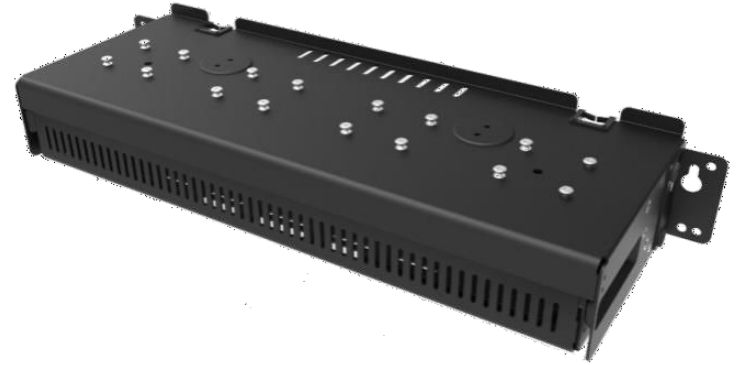


**MAXIMUM DENSITY  
RACK MOUNTED SOLUTION:**  
The Rack/Wall Mount Bracket have been optimized to work on a standard 19-inch rack, maximized density. The brackets can also be configured in different angles for maximum flexibility.

SPACE RACK  
BRACKETS  
3.5" APART  
(minimum)



## Rack/Wall bracket for multi-slot cradle



### BRKT-SCRD-SMRK-01

Rack/Wall mounting bracket, allows to install any Single Slot or Multi-Slot cradle on a wall or a 19" IT rack. The bracket also allows to install up to four 4Slot Spare Battery Chargers together on a wall or standard 19" IT rack.

## Compatible with all multi-slot cradle options:

**CRD-TC8X-5SCHG-01:** 5Slot Charge Only Cradle, charges up to five devices.

**CRD-TC8X-5SETH-01:** 5Slot Ethernet Cradle, charges up to five devices and provides Ethernet communication.

**CRD-TC8X-5SC4BC-01:** 4Slot Charge Only Cradle with 4Slot Spare Battery Charger, charges up to 4 devices and up to 4 spare batteries on the same cradle.

**CRD-TC8X-5SE4BC-01:** 4Slot Ethernet Cradle with 4Slot Spare Battery Charger, charges up to 4 devices and up to 4 spare batteries on the same cradle and provides Ethernet communication.

# Step 2:

## Choose battery / battery charging accessories

### Spare Battery options

#### 7000 mAh Battery



#### **BTRY-TC8X-70MA1-01**

PowerPrecision+ Spare Lithium Ion battery, 7000 mAh. Advanced new battery technology, provides a higher level of intelligence (State of Charge and State of Health) to deliver maximum performance.

TC8300 ships with BTRY-TC8X-70MA1-01

The battery is compatible with TC8000 and TC8300 devices for compatibility in mixed TC8XXX device populations Both

The battery is compatible with all TC8X spare battery charger options

# Step 2:

## Choose battery / battery charging accessories

### Spare Battery Charging Options

#### Spare Battery Charging Options:



#### **SAC-TC8X-4SCHG-01**

4-slot battery charger, charges four spare batteries. Compatible with BTRY-TC8X-67MA1-01 and BTRY-TC8X-70MA1-01 spare batteries

**Requires:** Power Supply **PWR-BGA12V50W0WW**, DC Line Cord **CBL-DC-388A1-01** and Country Specific 3 wire AC Line Cord.

#### Accessories for 4-slot battery charger:



#### **PWR-BGA12V50W0WW**

Level VI AC/DC Power Supply (Brick, Replacement for PWRS-14000-148R)

**AC Input:** 100-240V, 2.4A

**DC Output:** 12V, 4.16A, 50W

**Requires:** DC line cord and Country specific grounded AC line cord.



#### **CBL-DC-523A1-01**

DC "Y" Line Cord for running two SAC-TC8X-4SCHG-01 battery chargers with a single Level VI power supply PWR-BGA12V108W0WW, Level VI replacement for PWRS-14000-241R.



#### **PWR-BGA12V108W0WW**

Level VI AC/DC Power Supply (Brick, Replacement for PWRS-14000-241R)

**AC Input:** 100-240V, 2.8A

**DC Output:** 12V, 9A, 108W

**Requires:** DC line cord and Country specific grounded AC line cord.



#### **CBL-DC-388A1-01**

DC Line Cord for running the single slot cradles or battery chargers from a single Level VI power supply PWR-BGA12V50W0WW, Level VI replacement for PWRS-14000-148R.



#### **23844-00-00R**

US AC line cord, 7.5 feet long, grounded, three wire for power supplies.

# Step 2:

## Choose battery / battery charging accessories

### Mount options for battery charger



#### **RACK/WALL MOUNT BATTERY SOLUTION:**

The Rack/Wall Mount Bracket can be used to mount **FOUR 4-slot battery chargers** for a combined charging of 16 batteries on a single bracket.

### Rack/Wall bracket for battery chargers



#### **BRKT-SCRD-SMRK-01**

Rack/Wall mounting bracket, allows to install any Single Slot or Multi-Slot cradle on a wall or a 19" IT rack. The bracket also allows to install up to four 4Slot Spare Battery Chargers together on a wall or standard 19" IT rack.

# Step 3:

## Choose cables/adapters

### Cable / Adapter options

#### USB/Charging Cable



**CBL-TC8X-USBCHG-01**

Provides USB communication to the device.

**Requires:** Power supply **PWR-BUA5V16W0WW**, DC Line Cord **CBL-DC-383A1-01** and un-grounded country specific AC line cord.

#### Audio Cable



**CBL-TC8X-AUDBJ-01**

Audio adapter cable, compatible with 3.5mm wired headsets, recommended for PTT applications only.

**Requires:** 3.5mm headset.

#### **PWR-BUA5V16W0WW**

Level VI AC/DC Power Supply (Brick, Replacement for PWRS-14000-249R)

**AC Input:** 100-240V, 0.6A

**DC Output:** 5.4V, 3A, 16W

**Requires:** DC line cord and Country specific un-grounded AC line cord.

#### **CBL-DC-383A1-01**

DC Line Cord for running single slot cradles or charging cables from a single Level VI power supply PWR-BUA5V16W0WW, Level VI replacement for PWRS-14000-249R

#### **50-16000-182R**

US AC line cord, un-grounded, two-wire.



#### **HSDT-35MM-PTVP-02**

Over the ear headset with/MIC and PTT-3.5mm

#### **HS2100**

Rugged wired headset



**CBL-HS2100-3MS1-01** 3.5mm headset cable to connect to CBL-TC8X-AUDBJ-01



# Step 4:

## Choose carrying accessories

### Carrying options

#### Quick-draw Holster (non-DPM units)



##### SG-TC8X-QDHLST-01

Soft material holster, side loop accommodates a full-sized stylus (SG-TC7X-STYLUS1-03).  
Compatible with all non-DPM units  
**Requires:** Universal belt.

*\* Please note this accessory is a consumable and may require replacement during the device's lifespan.*

#### Presentation Holster



##### SG-TC8X-PMHLST-01

Soft material holster, side loop accommodates a full sized stylus (SG-TC7X-STYLUS-03).  
Allows to use the device with a wired headset and enables to use the device on free-hands scanning mode.  
**Requires:** Universal shoulder strap or universal belt.

*\* Please note this accessory is a consumable and may require replacement during the device's lifespan.*

#### Belt for Holster



##### 11-08062-02R

Universal belt for fabric holster.

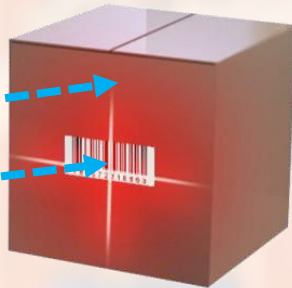
*\* Please note this accessory is a consumable and may require replacement during the device's lifespan.*

# Step 4:

## Choose carrying accessories

### Free-hands scanning mode

SG-TC8X-PMHLST-01: Presentation Holster



The TC8XXX senses that a box has been waved in front of it, using its proximity sensor, and activates the scan engine to decode the barcode.

The holster signals the TC8XXX to activate the proximity sensor for hands free presentation scanning.

#### HANDS-FREE PRESENTATION SCANNING FROM THE HIP

Users can place a TC8XXX in a holster for hands free scanning. **Simply pass box in front of the TC8XXX and it will decode the barcode automatically.**



# Step 5:

## Choose additional mounting options

### TC8XXX Other Mounting accessories

#### Forklift Mount – Standard (Available Q3, 2019)



**MNT-TC8X-FH-01**  
TC8XXX Forklift Holder

#### **MNT-TC8X-FHKT-01**

Un-powered Forklift Mount Kit. Allows installing the TC8XXX on a roll bar or square surface of a forklift and allows to use the device on landscape or portrait mode.

**Includes:** Forklift Holder (MNT-TC8X-FH-01), Clamp Mount with 6" Pedestal Arm (3PTY-PCLIP-241478).



#### **3PTY-PCLIP-241478**

6" Pedestal Mount w/ 5.125  
inch clamp

# Step 6:

## Choose other accessories

### Additional accessories

#### Hand Strap



##### SG-TC8X-HDSTP-01

Hand Strap, provides added safety against accidental drops of the device while on the move. Side loop accommodates a full-sized stylus(SG-TC7X-STYLUS1-03).

*\* Please note this accessory is a consumable and may require replacement during the device's lifespan.*

#### Wrist Lanyard



##### 50-12500-066

Wrist Lanyard. Convenient lanyard-style wrist strap allows for users to keep hands free to perform tasks and handle objects.

*\* Please note this accessory is a consumable and may require replacement during the device's lifespan.*

#### Stylus



##### SG-TC7X-STYLUS-03

Stylus with coiled tether 3-Pk. Made of conductive carbon-filled plastic material, optimized for enterprise durability.

*\* Please note this accessory is a consumable and may require replacement during the device's lifespan.*

#### Screen Protector



##### MISC-TC8X-SCRN-01

Pack of 5 spare plastic guards for TC8000.

*\* Please note this accessory is a consumable and may require replacement during the device's lifespan.*



# ZEBRA Country Specific AC Line Cord Options

Country	Grounded AC Line Cord
Abu Dhabi	50-16000-220R: AC line cord, 1.8 m, grounded, three wire, CEE 7/7 plug.
Australia	50-16000-217R: AC line cord, 1.9 m, grounded, three wire, AS 3112 plug.
Bolivia	50-16000-220R: AC line cord, 1.8 m, grounded, three wire, CEE 7/7 plug.
China	50-16000-217R: AC line cord, 1.9 m, grounded, three wire, AS 3112 plug. 50-16000-257R: AC line cord, 1.8 m, grounded, three wire, IEC 60320 C13 plug.
Dubai	50-16000-220R: AC line cord, 1.8 m, grounded, three wire, CEE 7/7 plug.
Egypt	50-16000-220R: AC line cord, 1.8 m, grounded, three wire, CEE 7/7 plug.
Europe	50-16000-220R: AC line cord, 1.8 m, grounded, three wire, CEE 7/7 plug.
Hong Kong	50-16000-219R: AC line cord, 1.8 m, grounded, three wire, BS1363 plug.
India	50-16000-669R: AC line cord, 1.9 m, grounded, three wire, BS 546 plug.
Iran	50-16000-220R: AC line cord, 1.8 m, grounded, three wire, CEE 7/7 plug.
Iraq	50-16000-219R: AC line cord, 1.8 m, grounded, three wire, BS1363 plug.
Israel	50-16000-672R: AC line cord, 1.9 m, grounded, three wire, S132 plug.
Italy	50-16000-671R: AC line cord, 1.8 m, grounded, three wire, CIE 23-16 plug.
Japan	50-16000-218R: AC line cord, 1.8 m, grounded, three wire, NEMA 1-15P plug.
Korea	50-16000-220R: AC line cord, 1.8 m, grounded, three wire, CEE 7/7 plug.
Malaysia	50-16000-219R: AC line cord, 1.8 m, grounded, three wire, BS1363 plug.
Russia	50-16000-220R: AC line cord, 1.8 m, grounded, three wire, CEE 7/7 plug.
Singapore	50-16000-219R: AC line cord, 1.8 m, grounded, three wire, BS1363 plug.
New Guinea	50-16000-217R: AC line cord, 1.9 m, grounded, three wire, AS 3112 plug.
United Kingdom	50-16000-219R: AC line cord, 1.8 m, grounded, three wire, BS1363 plug.
United States	23844-00-00R: US AC line cord, 7.5 ft. long, grounded, three wire.
	50-16000-221R: AC line cord, 1.8 m, grounded, three wire, USA NEMA 5-15P.
	50-16000-678R: AC line cord, 36in. long, grounded, three wire.
Vietnam	50-16000-220R: AC line cord, 1.8 m, grounded, three wire, CEE 7/7 plug.

Country	Ungrounded AC Line Cord
Argentina	50-16000-255R: AC line cord, 1.8 m, ungrounded, two wire, CEE7/16.
Australia	50-16000-666R: AC line cord, 1.8 m, ungrounded, two wire, AS 3112 plug.
Belgium	50-16000-255R: AC line cord, 1.8 m, ungrounded, two wire, CEE7/16.
Bermuda	50-16000-670R: AC line cord, 1.8 m, ungrounded, two wire, BS 1363 plug.
Chile	50-16000-255R: AC line cord, 1.8 m, ungrounded, two wire, CEE7/16.
China	50-16000-664R: AC line cord, 1.8 m, ungrounded, two wire, GB 2099-1-1996 plug.
France	50-16000-255R: AC line cord, 1.8 m, ungrounded, two wire, CEE7/16.
Germany	50-16000-255R: AC line cord, 1.8 m, ungrounded, two wire, CEE7/16.
Hong Kong	50-16000-670R: AC line cord, 1.8 m, ungrounded, two wire, BS 1363 plug.
India	50-16000-668R: AC line cord, 1.8 m, ungrounded, BS 546 plug.
Iraq	50-16000-670R: AC line cord, 1.8 m, ungrounded, two wire, BS 1363 plug.
Italy	50-16000-255R: AC line cord, 1.8 m, ungrounded, two wire, CEE7/16.
Malaysia	50-16000-670R: AC line cord, 1.8 m, ungrounded, two wire, BS 1363 plug.
Netherlands	50-16000-255R: AC line cord, 1.8 m, ungrounded, two wire, CEE7/16.
New Zeland	50-16000-666R: AC line cord, 1.8 m, ungrounded, two wire, AS 3112 plug.
Singapore	50-16000-670R: AC line cord, 1.8 m, ungrounded, two wire, BS 1363 plug.
South Korea	50-16000-255R: AC line cord, 1.8 m, ungrounded, two wire, CEE7/16.
Spain	50-16000-255R: AC line cord, 1.8 m, ungrounded, two wire, CEE7/16.
Sweeden	50-16000-255R: AC line cord, 1.8 m, ungrounded, two wire, CEE7/16.
United Kingdom	50-16000-670R: AC line cord, 1.8 m, ungrounded, two wire, BS 1363 plug.
United States	50-16000-182R: US AC line cord, ungrounded, two wire.
Vietnam	50-16000-255R: AC line cord, 1.8 m, ungrounded, two wire, CEE7/16.